



ASELight 160

LED SURGICAL LIGHT

Unique coverage of varied and highest lighting requirements now available in one single compact casing.

asetronics 
Advanced Swiss Electronics

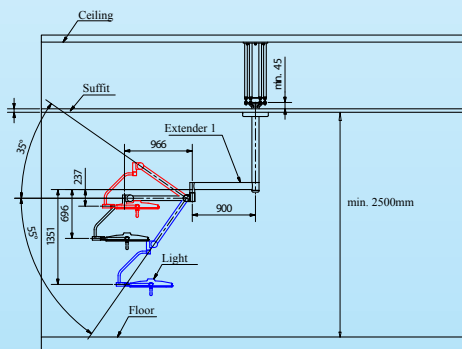
Precise working thanks to high quality of light



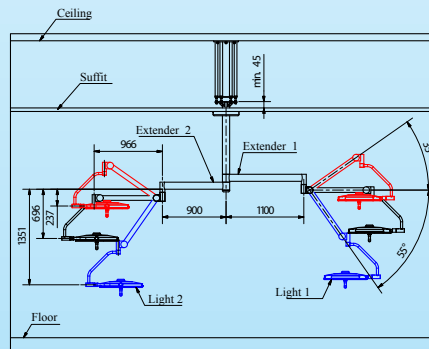
Excellent illuminated working area thanks to a compact system and flexible positioning



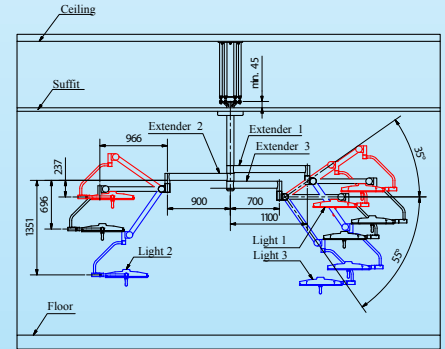
Single System



Twin System



Trio System



Technical Specifications Light

Intensity of illumination E_c @ 100 cm	160,000 lux
Irradiance E (typ.)	$527 \pm 20 \text{ W/m}^2$
Quotient E/E_c (typ.)	$3.29 \text{ mW/m}^2/\text{lux}$
Light field diameter	220 mm / 300 mm
Colour temperature	4000 K / 4500 K / 5000 K
Colour rendering index Ra	97
R9	98
Illumination depth L1 + L2 (@60% E_c)	400 mm + 500 mm
Power supply	24 VDC $\pm 2 \text{ V}$
Power consumption	Max. 95 W (typ. < 90 W)
Minimum service life (LED)	70,000 h
Ambient operating temperature	0° C to 40° C
Storage and transport temperature	0° C to 60° C
Relative humidity in operation	30% – 75%
Relative humidity for storage and transport	10% – 75%
Air pressure	500 hPa - 1060 hPa
IP protection class	IP54
Weight with cardan arm	18 kg
Dimensions (light only)	600 mm x 600 mm x 100 mm

Applications

- » General surgery
- » Neurosurgery
- » Cardiac surgery
- » Oral surgery

External control unit

Version desk housing (Duo)

for the operation of two lights and a camera



Version desk housing (Single)

for the operation of the light and a camera



Version desk housing (Single only light)

for the operation of the light



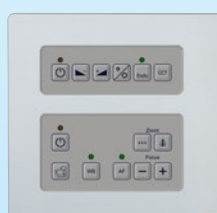
Version installation housing (Duo)

for the operation of two lights and a camera



Version installation housing (Single)

for the operation of the light and a camera



Version installation housing (Single only light)

for the operation of the light

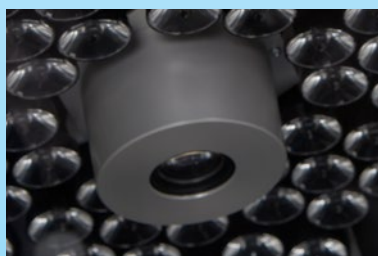


Uninterruptible Power Supply (UPS)

» Battery operating > 4 hours



Integrated HD Camera in the light head



External HD Camera on springarm



Technical Specifications HD Camera

Specification	Details
HD camera	Manufacturer Sony
Video signal	HD 1080i/50, 1080i/59.94
Lens	20x optical zoom (F1.6 bis F3.5) f= 4.7 mm (wide) ~ 94 mm (tele)
Lens (Dental)	10x optical zoom (F1.8 bis F2.1) f= 5.1 mm (wide) ~ 51 mm (tele)
Video-Output	HD analog component (Y/Pb/Pr)



Advantages of the new examination light in LED technology

- » Light intensity: 160,000 lux @ 100 cm distance
- » Colour temperature: adjustable from the control panel in steps 4,000 K / 4,500 K / 5,000 K
- » Colour rendering index (CRI): 97
- » Light field diameter: 22 cm / 30 cm
- » Dimmable via the control panel or using the integrated, contact-free sensor
- » Detachable sterilizable handgrip
- » Endolight mode
- » No infrared radiation
- » The curved airflow and temperature optimized shape of the aluminium diecast housing guarantee a free air flow
- » High reliability and no maintenance costs
- » LED service life of over 70,000 hours
- » Extremely low energy consumption (typ. < 90 W) and extremely low energy costs (30% in comparison to halogen)
- » Environmentally friendly (recyclable, does not contain any heavy metals)
- » High shock and vibration resistance
- » No risk of implosion (compared to halogen)
- » Safe because of the low voltage
- » Simple and quick to clean and disinfect thanks to high-quality materials and a smooth, sealed surface
- » 5 Years warranty on the light head

Swiss made

asetronics 

Advanced Swiss Electronics

Freiburgstrasse 251
3018 Bern
Switzerland

Internet: www.aseilight.ch
www.asetronics.ch
Telephone: +41 (0)31 329 32 19
Telefax: +41 (0)31 329 31 22
E-mail: info@asetronics.ch

CE



(Version 08/2017)